

## Front Balancer Shaft - Removal

### WARNING

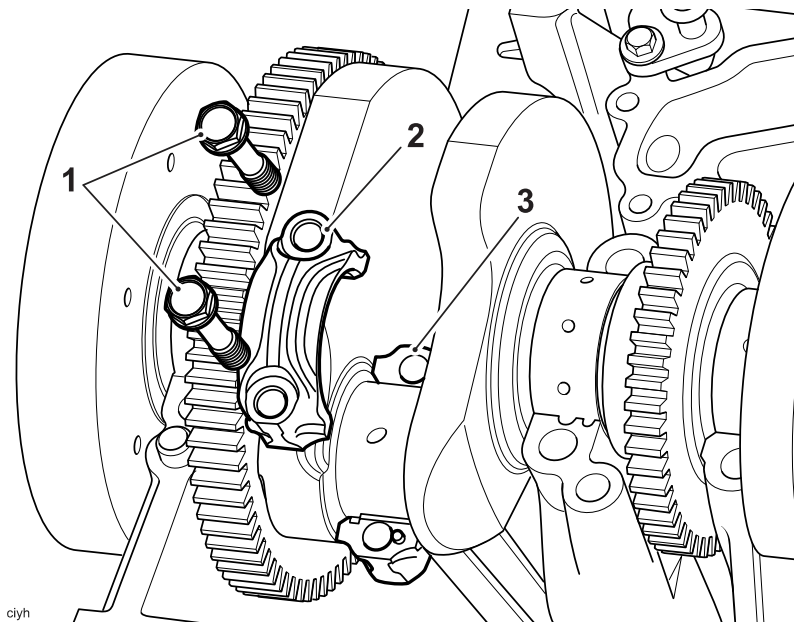
Before starting work, ensure the motorcycle is stabilised and adequately supported. This will help prevent it from falling and causing injury to the operator or damage to the motorcycle.

- Remove the engine (see [Engine - Removal](#)).
- Separate the lower crankcase from the upper crankcase (see [Crankcase - Removal](#)).

#### Note

- **The connecting rods and caps should be identified, using a paint mark or similar.**

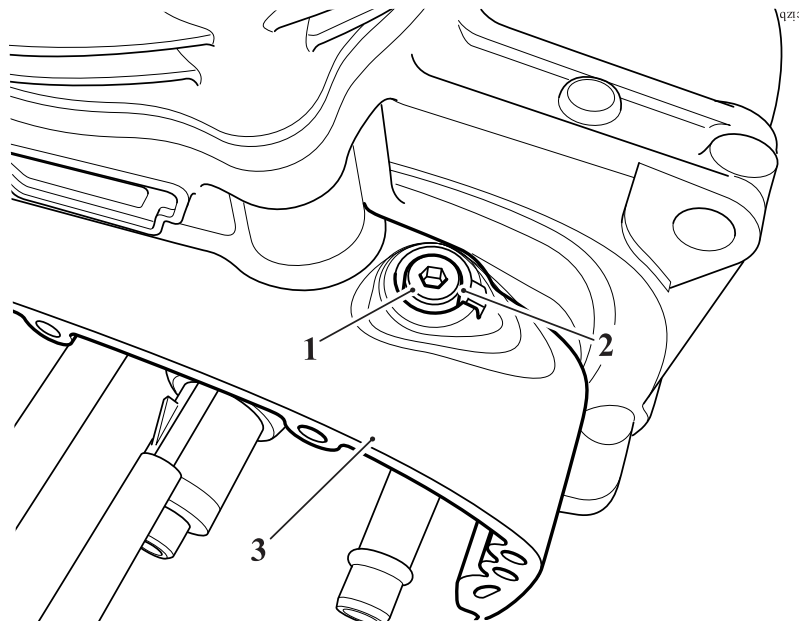
1. Remove and discard the connecting rod bolts.



1. **Connecting rod bolts**
2. **Connecting rod cap**
3. **Connecting rod**

2. Remove the crankshaft.

3. Remove the front balancer shaft blanking screw and washer, discard the washer.

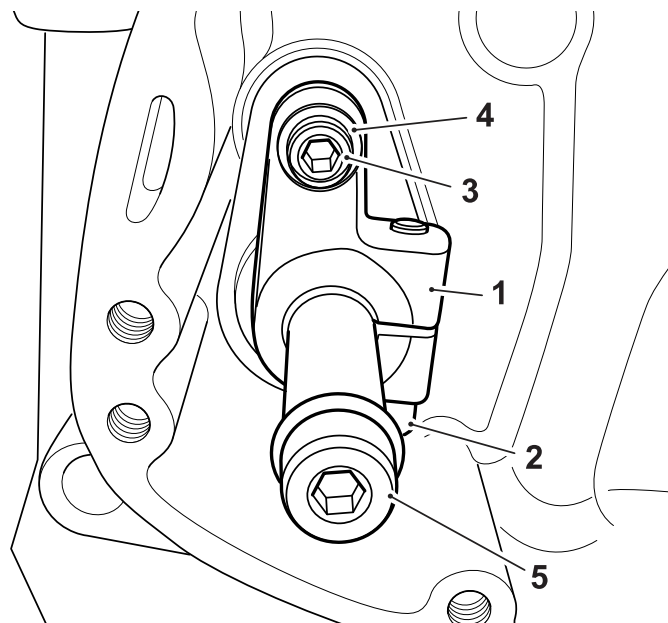


1. Blanking screw
2. Washer
3. Upper crankcase

#### Note

- The front dead shaft clamp is marked with the **F** facing away from the crankcase.

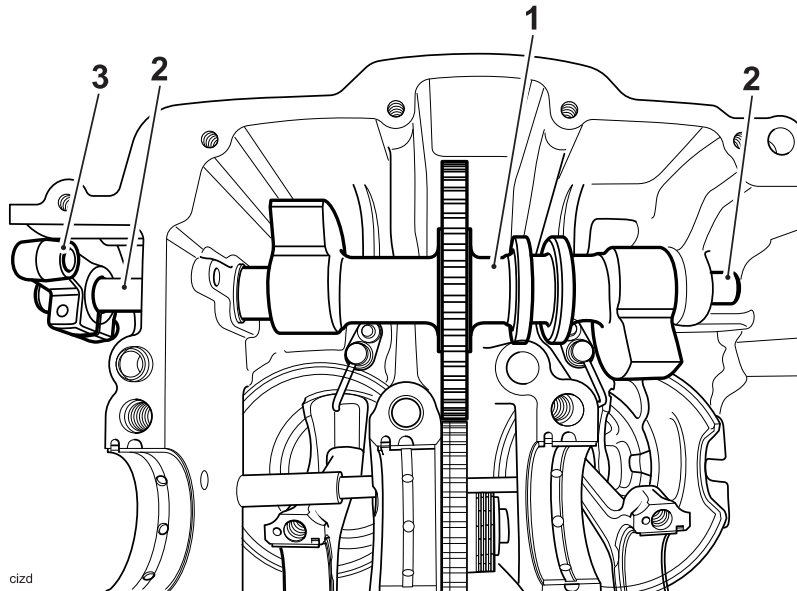
4. Loosen but do not fully remove the dead shaft clamp locking screw.
5. Remove the dead shaft clamp securing screw and washer.



1. Dead shaft clamp
2. Locking screw
3. Securing screw

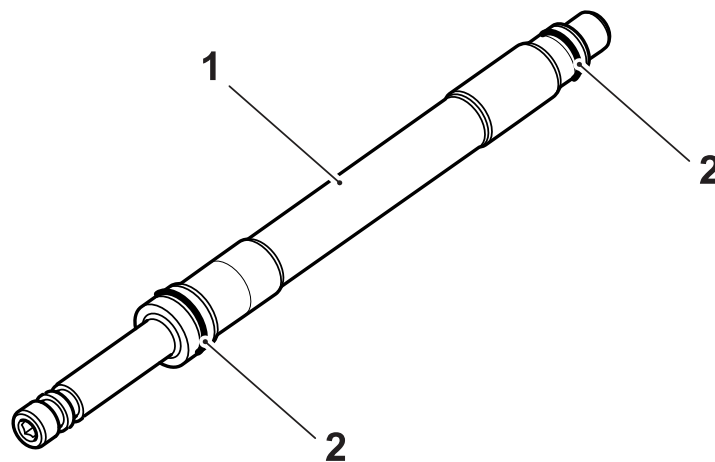
4. Washer
5. Dead shaft

6. Support the balancer shaft and noting its orientation slide the dead shaft from the crankcase.



1. Balancer
2. Dead shaft
3. Dead shaft clamp

7. Remove the balancer shaft.
8. Remove and discard the O-rings from the deadshaft.



1. Deadshaft

## 2. O-rings