

## ABS Hydraulic Modulator/ECM - Removal

### WARNING

Before starting work, ensure the motorcycle is stabilised and adequately supported. This will help prevent it from falling and causing injury to the operator or damage to the motorcycle.

### CAUTION

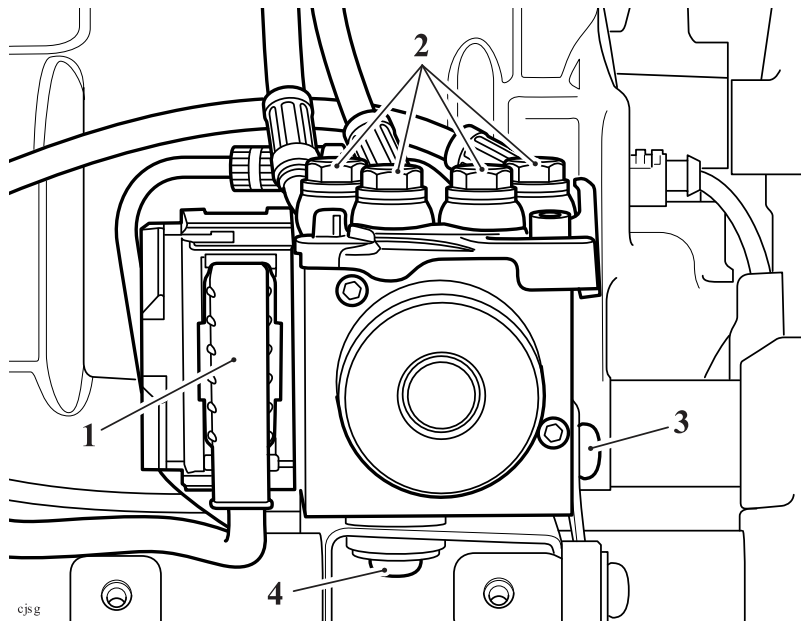
To prevent paint damage, do not spill brake fluid onto any area of the bodywork. Spilled brake fluid will damage paintwork.

- Remove the seat (see [Seat - Removal](#)).
  - Disconnect the battery, negative (black) lead first (see [Battery - Removal](#)).
  - Drain the brake fluid from the front master cylinder by bleeding the system at the front caliper until all fluid has been expelled (see [Bleeding the Front Brakes, Renewing Brake Fluid](#)).
  - Drain the fluid from the rear master cylinder by bleeding the system at the rear caliper until all fluid has been expelled (see [Bleeding the Rear Brakes, Renewing Brake Fluid](#)).
1. Remove the swinging arm (see [Swinging Arm - Removal](#)).
  2. Remove the alternator regulator/rectifier (see [Alternator Regulator/Rectifier - Removal](#)).

### CAUTION

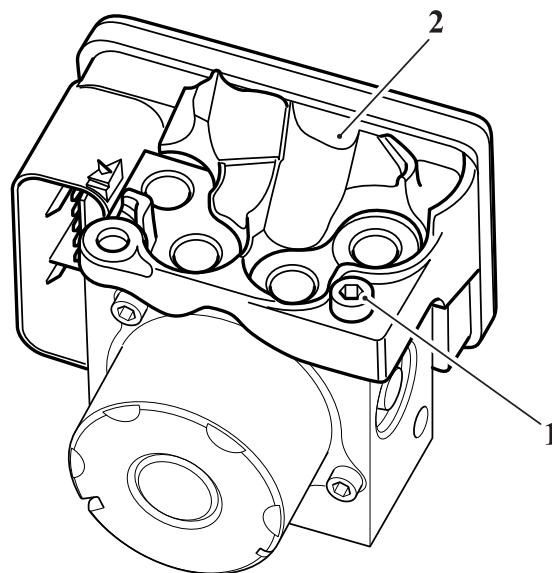
When loosening the ABS modulator brake line unions, hold the ABS modulator. Note the position of the four brake lines on the ABS modulator for installation.

3. Disconnect the ABS modulator multiplug (see [ABS Electrical Connectors](#)).
4. Remove the four brake line unions and discard the sealing washers.
5. Remove the two fixings shown in the following illustration and remove the ABS modulator. Discard the fixings.



1. **ABS modulator harness**
2. **Brake line unions**
3. **Fixing (ABS modulator to bracket)**
4. **Fixing (ABS modulator bracket to frame)**

6. If necessary, release the fixing and remove the anti-rotation moulding from the ABS modulator. Discard the fixing.



1. **Fixing**
2. **Anti-rotation moulding**